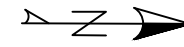
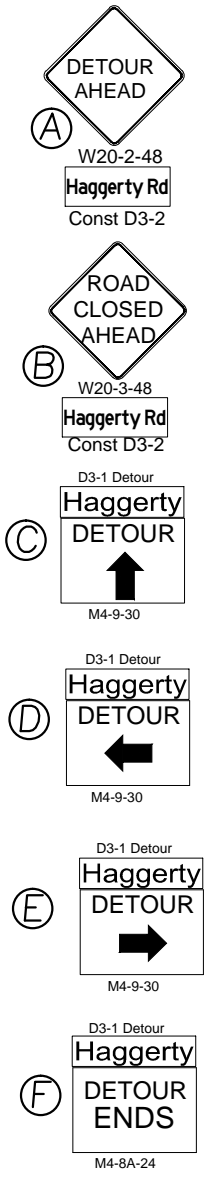
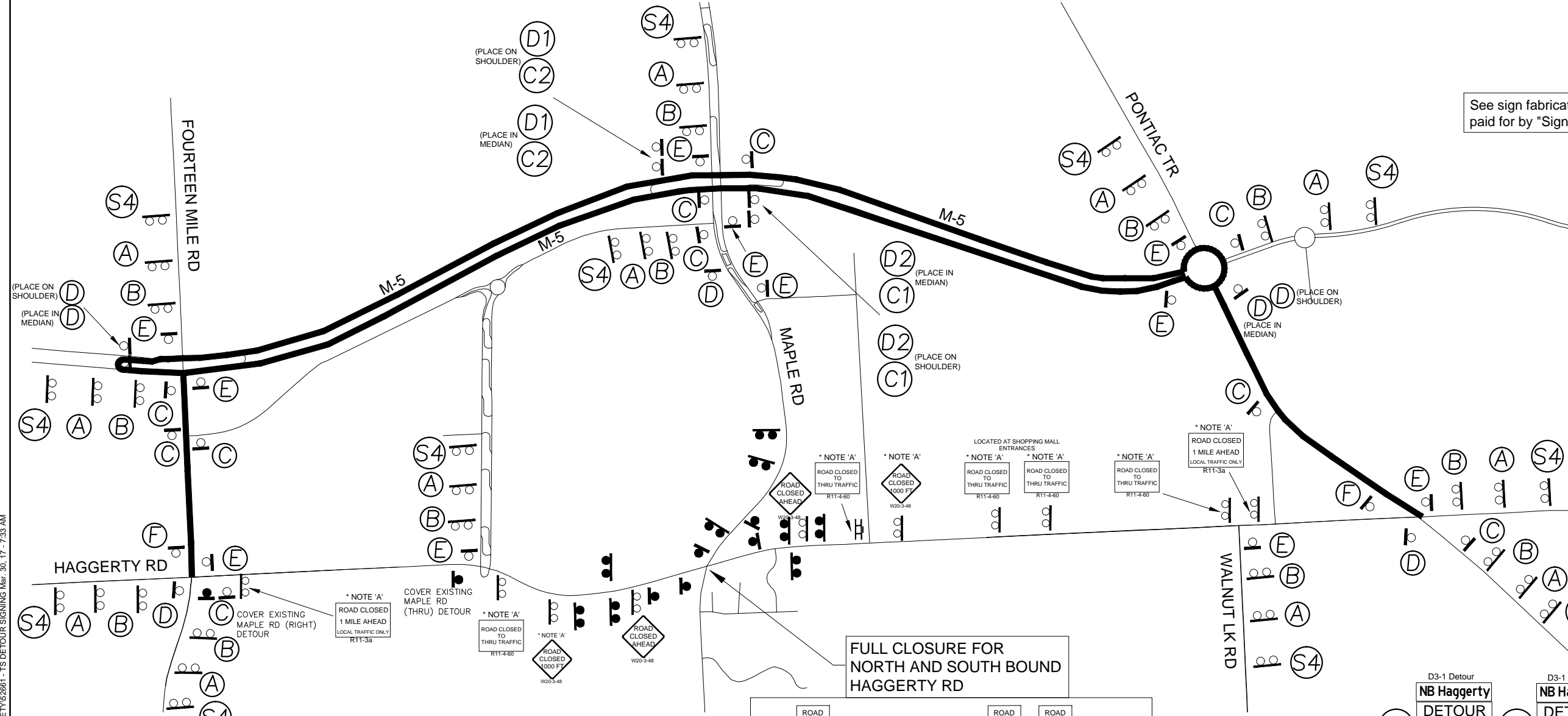


HAGGERTY RD DETOUR

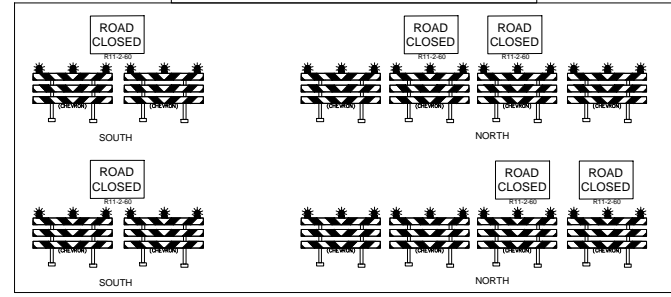


Know what's below.
Call before you dig.

See sign fabrication sheets for design of signs paid for by "Sign, Type B, Temp, Special."



FULL CLOSURE FOR NORTH AND SOUTH BOUND HAGGERTY RD



- SIGNS REQUIRED**
- 2 - M4-8A (24x18)
 - 36 - M4-9 (24x18)
 - 6 - R11-2 (48x30)
 - 2 - R11-3A (60x30)
 - 5 - R11-4 (60x30)
 - 12 - W20-2 (48x48)
 - 17 - W20-3 (48x48)
 - 38 - D3-1 DETOUR (30x12)
 - 25 - D3-2 CONST (48x18)
 - 12 - SPECIAL (96x48)

NOTES
NOTE 'A'- PLACE ON SHOULDER OF ROAD WITH ONE TYPE 3 BARRICADE

Construction Detour for west bound Maple Rd to remain in place.

Haggerty Rd Closed
At Maple Rd
Follow Detour
Sat X/XX 7AM to Sun X/XX 7PM

SIGNS THIS SHEET BY CONTRACTOR		
ITEM	UNIT	QTY
Sign, Type B, Temp, Prismatic, Furn	Sft	800
Sign, Type B, Temp, Prismatic, Oper	Sft	800
Sign, Type B, Temp, Prismatic, Special, Furn	Sft	550
Sign, Type B, Temp, Prismatic, Special, Oper	Sft	550
Barricade, Type III, High Intensity, Double Sided, Lighted, Furn	Ea	20
Barricade, Type III, High Intensity, Double Sided, Lighted, Oper	Ea	20
Sign Cover	Ea	2

 BEVERLY HILLS, MICHIGAN PHONE: 977-859-834 WEB: WWW.RCCOMB.ORG	PROJECT NO. 52661	TS HAGGERTY ROAD DETOUR	DESIGN PHASE FINAL PLANS
	DATE 03/17/17		MAPLE ROAD HAGGERTY ROAD TO DRAKE ROAD

PROJECT NO. 52661 - MAPLE ROAD HAGGERTY TO DRAKE ROAD FILES MASTER PLAN TRAFFIC SAFETY 52661 - TS DETOUR SIGNING Mar. 30, 17 - 7:33 AM

PROJECT NAME: MAPLE ROAD HAGGERTY ROAD TO DRAKE ROAD
CONTROL SECTION: MDT JOB NO. 132781A
STU63192