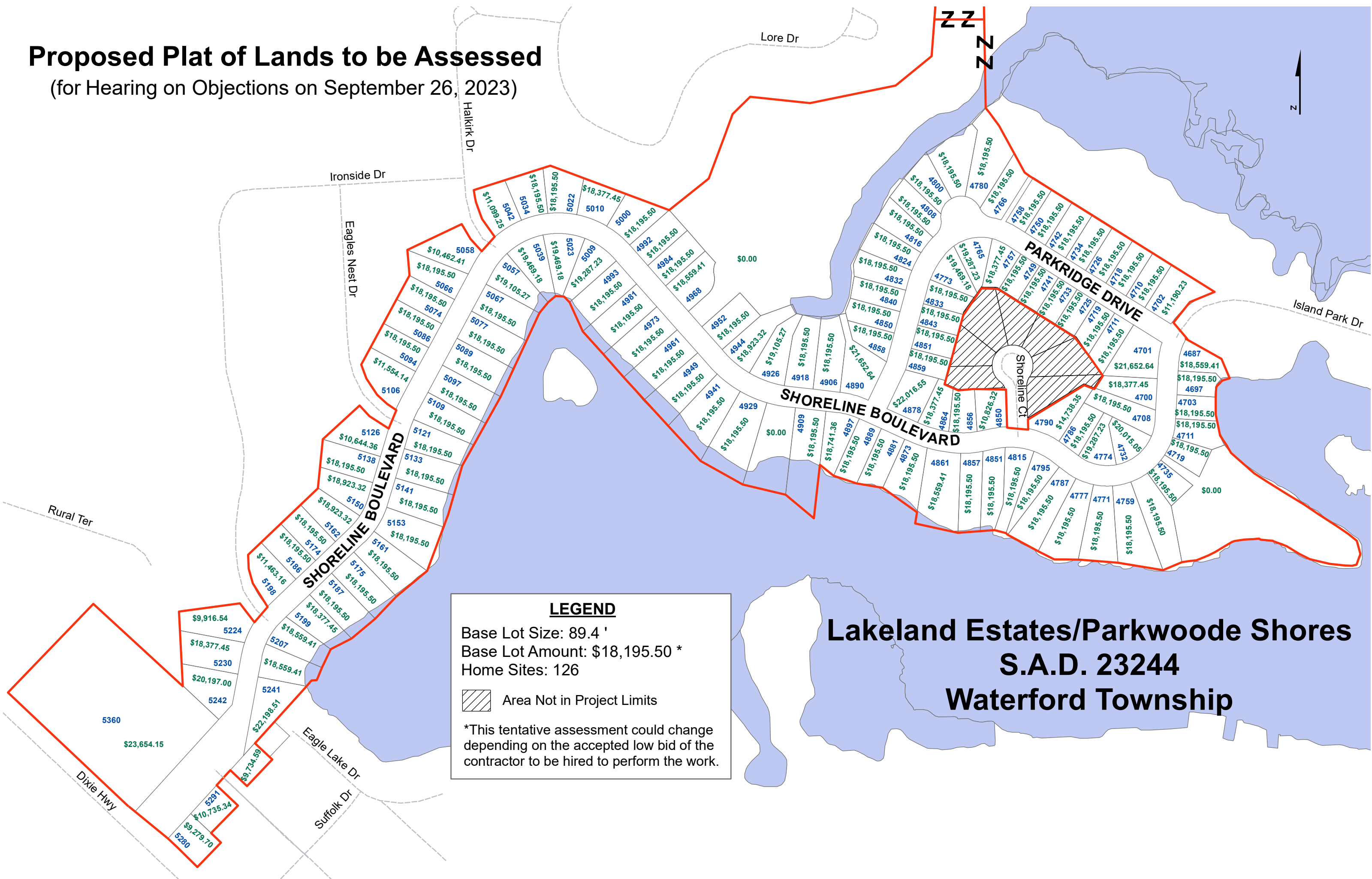



# Proposed Plat of Lands to be Assessed

(for Hearing on Objections on September 26, 2023)



**LEGEND**

Base Lot Size: 89.4 '  
Base Lot Amount: \$18,195.50 \*  
Home Sites: 126

 Area Not in Project Limits

\*This tentative assessment could change depending on the accepted low bid of the contractor to be hired to perform the work.

**Lakeland Estates/Parkwoode Shores  
S.A.D. 23244  
Waterford Township**